

CONCORD

EF CONCRETE PUMPS



Affordable Reach

CONCORD

EP CONCRETE PUMPS



The Best **Concrete Pump** in North America,
We Can Prove it!



CCP-65SZ5-I80



CCP-40XZ5-I70



CCP-3IXZ4-I20



CCP-60XZ5-I80



CCP-40XZ4-I70



CCP-CML-100HP



CCP-56XZ5-I80



CCP-40XR4-I70



CCP-CML-100HR



CCP-5IXZ5-I80



CCP-38XZ5-I70



CCP-CML-100



CCP-47XZ5-I80



CCP-38XZ4-I70



CCP-CML-70

The Best **Concrete Pump** in North America, **CONCORD** CONCRETE PUMP!

Concord Concrete Pumps has been in business for 45 years, 20 years pumping concrete and 25 years of manufacturing high-quality concrete pumps.

Concord prides itself on manufacturing world-class equipment. Concord stands alone in creating the toughest, safest and cost-effective solutions in the concrete pumping industry.



Mr. Flores's first concrete pump

Concord launched, in 2003, the first 40-meter concrete boom pump on a 3-axle truck at the World of Concrete®.

In 2006 Concord introduced the 65-meter boom pump to the market; the world's largest truck-mounted concrete boom pump, winning the Construction Equipment top 100 Award. That same pump is still in operation today using the original main pump, proving that the toughness and safety of Concord pumps are unparalleled.



Isidro Flores
President

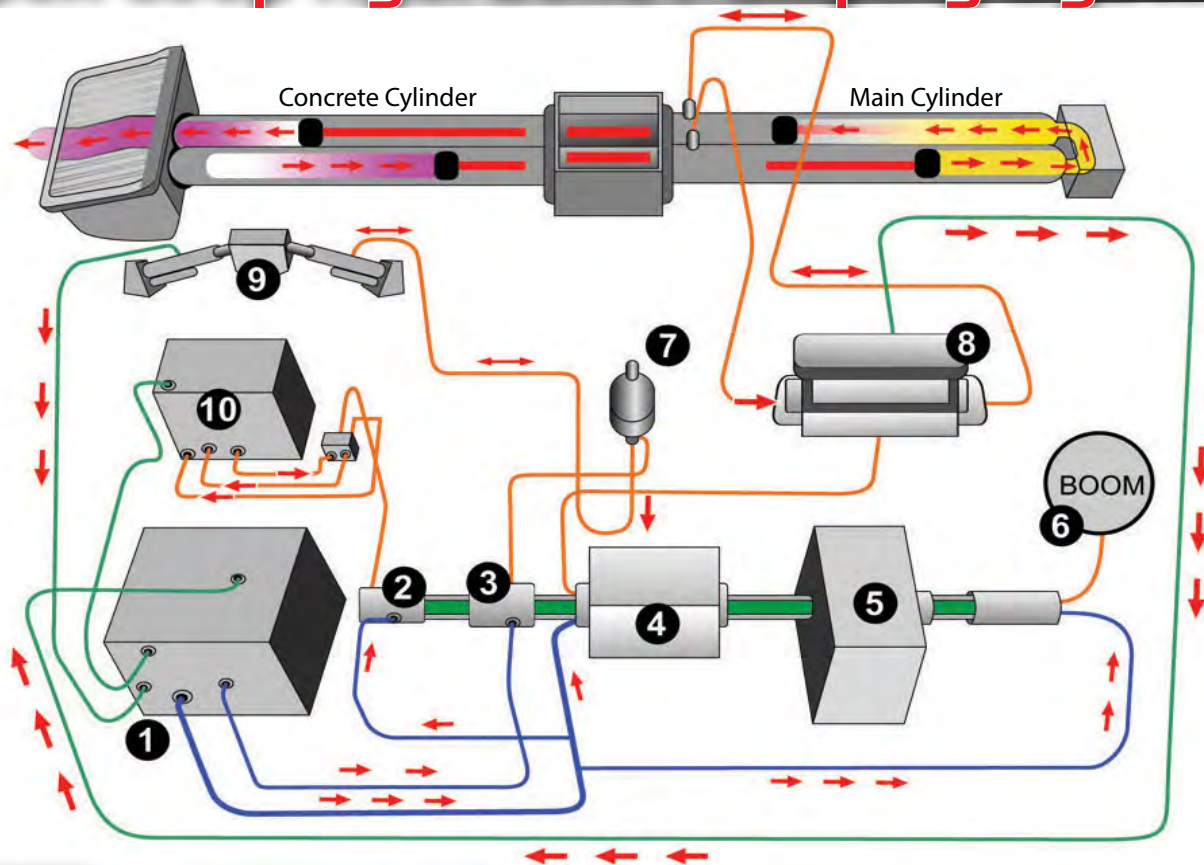


World's first 65-meter boom pump

The Best Concrete Pump comes from the Best Components!

- Engineered and manufactured by Concord Concrete Pumps
- North American owned and operated
- Open-loop hydraulic system for maximum cooling, efficiency, and smooth operation
 - The longest life span in the market
 - No air pressure tanks
- Exceptional quality of Hydraulic Pumps:
 - Main oil pump: lasts longer than 15 years under steady operation
 - Boom oil pump: offers the smooth operation of booms
 - Shifting oil pump: offers powerful operation and the longer life
- The proportional boom control valves, holding valves and turning valves offers better safety and smooth operation
- Hydraulic sensing protocol overwrites allowing Manual operation
- Hard chromed concrete delivery cylinders with automatic lubrication
- Centralized high-quality PCB main control panel & S/W box
- Proportional Wireless remote control with a Back-up transmitter
- High-quality big mouth 9" x 7" S-tube, wear-plate and wear-ring
- Fully adjustable volume control for slow pumping even at very high pressure

Open-Loop Hydraulic Pumping System



LEGENDS

- | | |
|--|--|
| ● CONCRETE | ● OPERATION OIL |
| ● INPUT LINE | ● OPERATING LINE |
| ● OUTPUT LINE | |

- | | |
|---------------------|-------------------|
| 1. OIL TANK | 6. BOOM PUMP |
| 2. DOUBLE GEAR PUMP | 7. ACCUMULATOR |
| 3. VALVE OIL PUMP | 8. MANIFOLD BLOCK |
| 4. MAIN PUMP | 9. S-VALVE |
| 5. P.T.O. | 10. OIL COOLER |

Quality **Parts** and Incredible **Service**
at Your Reach!



Parts Department



Ron McCallum

Parts Manager

1-604-319-7867

parts@concordpumps.ca

Service Department

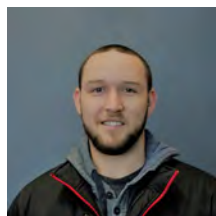


Lino Flores

Vice President

1-604-970-3599

lflores@concordpumps.ca



Nick Stetsyuk

Service Agent

1-604-841-3345

nstetsyuk@concordpumps.ca

www.concordpumps.com

1608 Broadway Street, Port Coquitlam, British Columbia, Canada, V3C 2M8

Telephone: **1-604-468-7867** | Toll Free: **1-888-201-2223**

Ideal for big jobs; 5 sections
Z-R fold, 5 inch line,
180 cubic meters per hour.



PUMP SPECIFICATIONS

Maximum output	237 yd ³ /hr (180 m ³ /hr)
Delivery cylinder (hard chromed)	9" x 83" (230 mm x 2100 mm)
Strokes per minute	30
Concrete pressure (rod side)	1269 PSI (87.5 Bar)
Concrete pressure (head side)	1885 PSI (130 Bar)
Hopper capacity	21 ft ³ (600 litres)
S-tube	9" x 7" (230 mm x 180 mm)
Hydraulic pump	Rexroth A20VLO190
Cycling system	All hydraulic sensing w/ manual overrides
Max. aggregate size	2 1/2" (65 mm)

BOOM SPECIFICATIONS

5 section Z fold boom (vert. reach)	213' (65 m)
Maximum horizontal reach	199' (60.6 m)
Reach from front of truck	189' (57.6 m)
Unfolding height	44' (13.5 m)
Rotation	370 degree
Section articulation	92 / 180 / 230 / 180 / 235
Proportional Boom	Yes
Delivery line	5" (125 mm)
1st Section	40' (12.2 m)
2nd Section	33'9" (10.3 m)
3rd Section	37' (11.3 m)
4th Section	43'7" (13.3 m)
5th Section	43'3" (13.2 m)

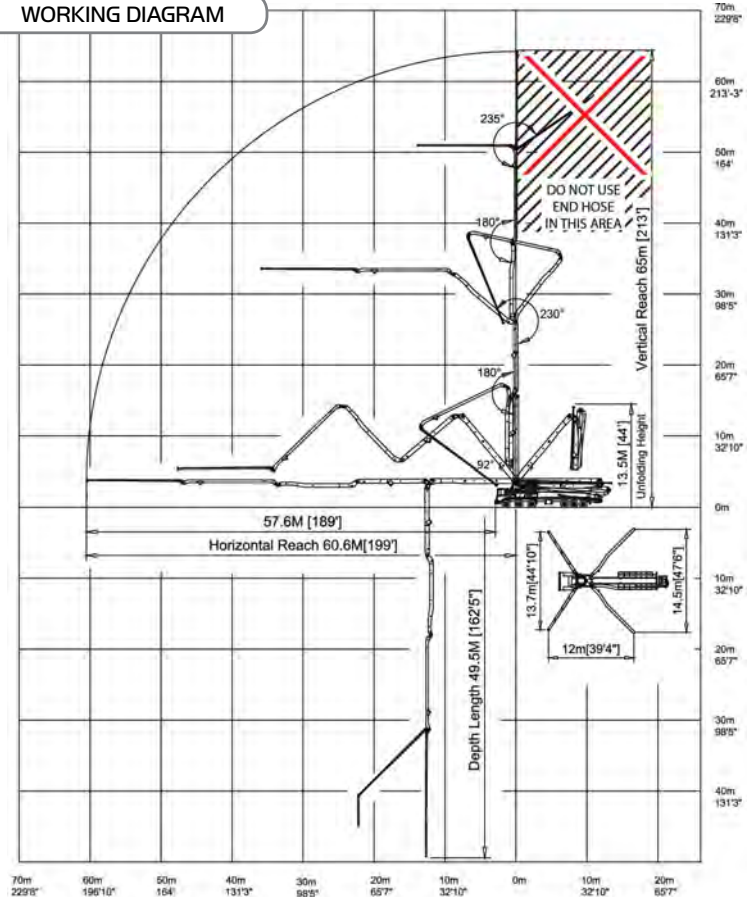
OUTRIGGER SPECIFICATIONS

All hydraulic	Yes
Front spread	44' 10" (13.7 m)
Rear spread	47' 6" (14.5 m)
Max Outrigger weight	54,000 Kg (119,049 Lbs)

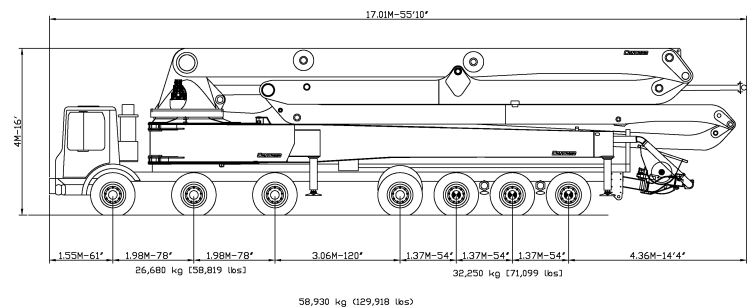
STANDARD ACCESSORIES

5" (125mm) pipe & elbows	One safety sling
Wireless proportional remote control	Tool box with basic repair items and testing gauge
LED boom light kit	Spare hydraulic hose kit
LED working lamps on the side	Spare sensing valves
Magnetic working lamp	Spare pumping relay and fuses
Blow-out system cap (water & air)	One clamp (125 mm)
Hopper vibrator	Outrigger pads 4 pieces
Automatic greasing system	Grundfos type water pump
(hopper only) Lincoln	One water hose plus nozzle
End hose length 13' (4 m)	Two clean up sponges
Transition door with slurry port	Clean-up scraper
Company name & phone number decals	Two manual books
	Quick couplings for filter system

WORKING DIAGRAM



WEIGHT DIAGRAM



Most compact 60 meter pump in the market with convenience of X-style outriggers; 5 sections Z-fold boom, 5 inch line, 180 cubic meters per hour.



PUMP SPECIFICATIONS

Maximum output (fully variable)	237 yd ³ /hr/hr (180 m ³ /hr)
Concrete cylinder (hard chromed)	9" x 83" (230 mm x 2100 mm)
Strokes per minute	30
Concrete pressure (rod side)	1269 PSI (87.5 Bar)
Concrete pressure (head side)	1885 PSI (130 Bar)
Hopper capacity	21 ft ³ (600 litres)
S-tube	9" x 7" (230 mm x 180 mm)
Hydraulic pump	Rexroth A20VLO190
Cycling system	All hydraulic sensing w/ manual overrides
Max. aggregate size	2 1/2" (65mm)

BOOM SPECIFICATIONS

5 section Z fold boom (vert. reach)	192' 1" (58.6 m)
Maximum horizontal reach	178' 6" (54.4 m)
Reach from front of truck	162' 4" (49.5 m)
Unfolding height	42' 8" (13 m)
Rotation	370 degree
Section articulation	92/ 180/ 210/ 180/ 220
Proportional Boom	Yes
Delivery line	5" (125 mm)
1st Section	36' (11.0 m)
2nd Section	29' 5" (9.0 m)
3rd Section	31' 8" (9.7 m)
4th Section	40' (12.2 m)
5th Section	41' (12.5 m)

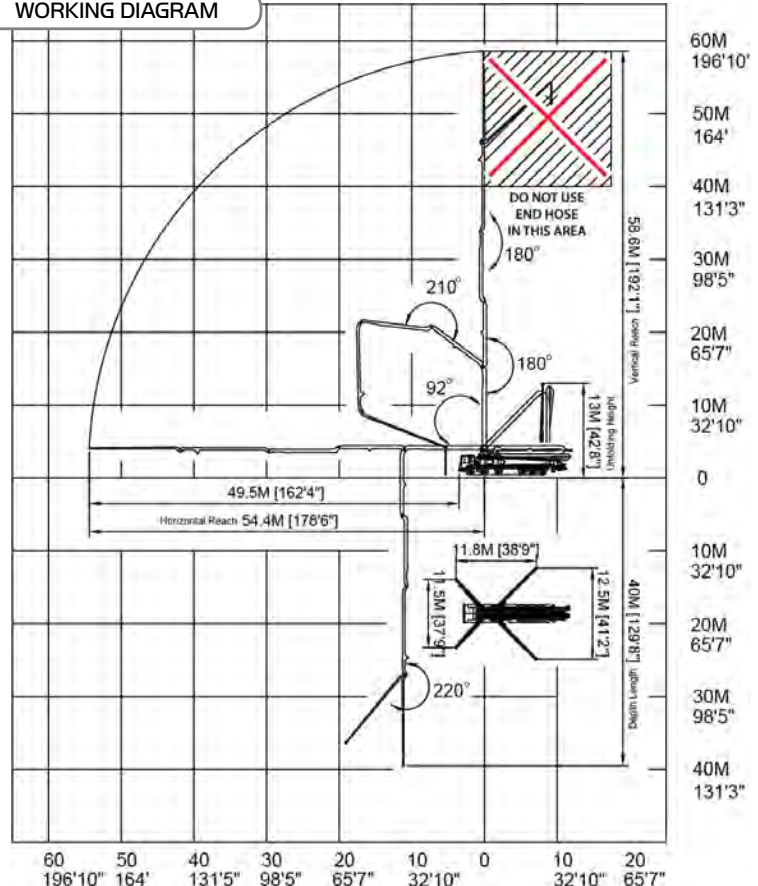
OUTRIGGER SPECIFICATIONS

All hydraulic	Yes
Front spread	37' 9" (11.5 m)
Rear spread	41' 2" (12.5 m)
Max Outrigger weight	44,000 Kg (97,000 Lbs)

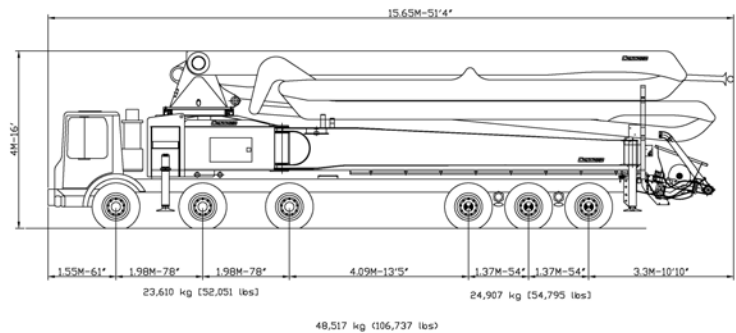
STANDARD ACCESSORIES

5" (125mm) pipe & elbows	One safety sling
Wireless proportional remote control	Tool box with basic repair items and testing gauge
LED boom light kit	Spare hydraulic hose kit
LED working lamps on the side	Spare sensing valves
Magnetic working lamp	Spare pumping relay and fuses
Blow-out system cap (water & air)	One clamp (125 mm)
Hopper vibrator	Outrigger pads 4 pieces
Automatic greasing system	Grundfos type water pump
(hopper only) Lincoln	One water hose plus nozzle
End hose length 13' (4 m)	Two clean up sponges
Transition door with slurry port	Clean-up scraper
Company name & phone number decals	Two manual books
	Quick couplings for filter system

WORKING DIAGRAM



WEIGHT DIAGRAM



Most compact 56 meter pump in the market with convenience of X-style outriggers; 5 sections Z-R fold boom, 5 inch line, 180 cubic meters per hour.



PUMP SPECIFICATIONS

Maximum output (fully variable)	237 yd ³ /hr/hr (180 m ³ /hr)
Concrete cylinder (hard chromed)	9" x 83" (230 mm x 2100 mm)
Strokes per minute	30
Concrete pressure (rod side)	1269 PSI (87.5 Bar)
Concrete pressure (head side)	1885 PSI (130 Bar)
Hopper capacity	21 ft ³ (600 litres)
S-tube	9" x 7" (230 mm x 180 mm)
Hydraulic pump	Rexroth A20VLO190
Cycling system	All hydraulic sensing w/ manual overrides
Max. aggregate size	2 1/2" (65mm)

BOOM SPECIFICATIONS

5 section Z fold boom (vert. reach)	182' 7" (55.7 m)
Maximum horizontal reach	170' 6" (52 m)
Reach from front of truck	160' 7" (49 m)
Unfolding height	31' 8" (9.7 m)
Rotation	370 degree
Section articulation	92° / 180° / 240° / 180° / 245°
Proportional Boom	Yes
Delivery line	5" (125 mm)
1st Section	34' 8" (10.6 m)
2nd Section	27' 6" (8.4 m)
3rd Section	32' 8" (10 m)
4th Section	37' (11.3 m)
5th Section	36' (11 m)

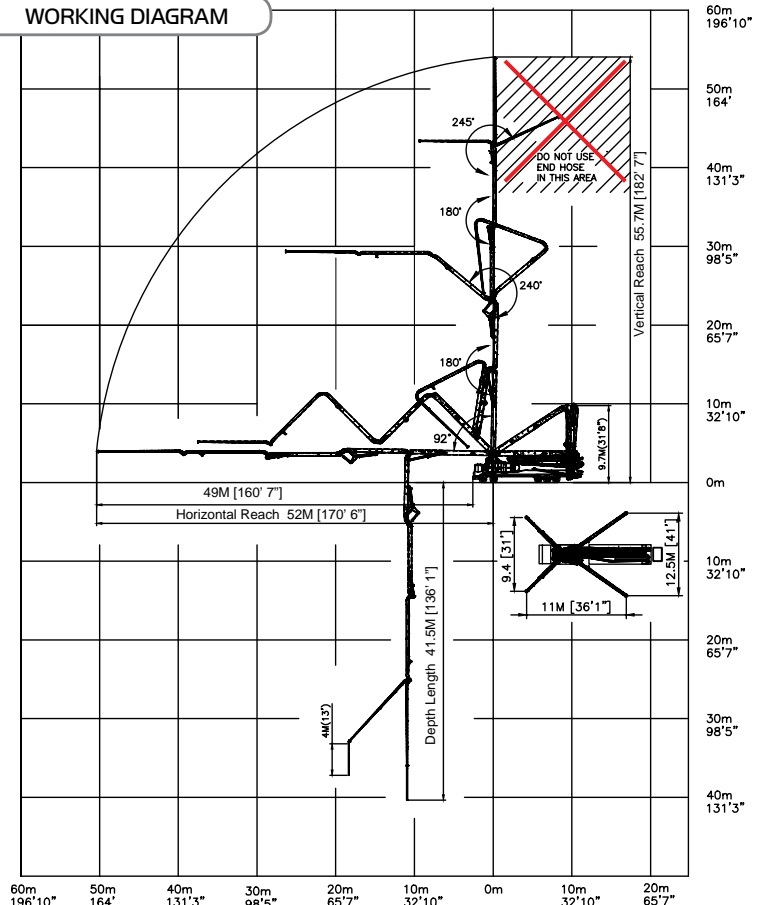
OUTRIGGER SPECIFICATIONS

All hydraulic	Yes
Front spread	31' (9.4 m)
Rear spread	41' (12.5 m)
Max Outrigger weight	40,000 Kg (88,186 Lbs)

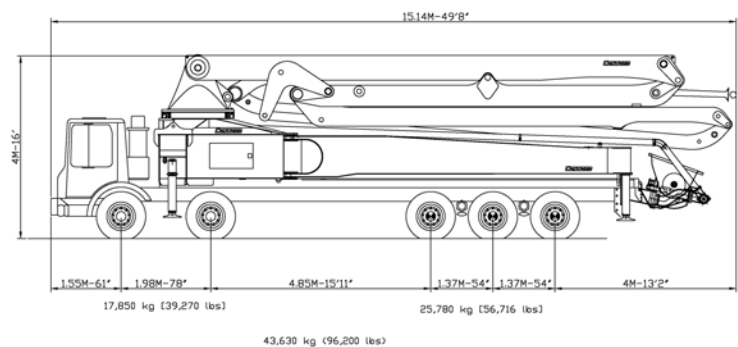
STANDARD ACCESSORIES

5" (125mm) pipe & elbows	One safety sling
Wireless proportional remote control	Tool box with basic repair items and testing gauge
LED boom light kit	Spare hydraulic hose kit
LED working lamps on the side	Spare sensing valves
Magnetic working lamp	Spare pumping relay and fuses
Blow-out system cap (water & air)	One clamp (125 mm)
Hopper vibrator	Outrigger pads 4 pieces
Automatic greasing system	Grundfos type water pump
(hopper only) Lincoln	One Water hose plus nozzle
End hose length 13' (4 m)	Two clean up sponges
Transition door with slurry port	Clean-up scraper
Company name & phone number decals	Two manual books
	Quick couplings for filter system

WORKING DIAGRAM



WEIGHT DIAGRAM



Compact 51 meter pump with
convenience of X-style outriggers;
5 sections Z-R fold boom, 5 inch
line, 180 cubic meters per hour.



PUMP SPECIFICATIONS

Maximum output (fully variable)	237 yd ³ /hr (180 m ³ /hr)
Concrete cylinder (hard chromed)	9" x 83" (230 mm x 2100 mm)
Strokes per minute	30
Concrete pressure (rod side)	1269 PSI (87.5 Bar)
Concrete pressure (head side)	1885 PSI (130 Bar)
Hopper capacity	21 ft ³ (600 litres)
S-tube	9" x 7" (230 mm x 180 mm)
Hydraulic pump	Rexroth A20VLO190
Cycling system	All hydraulic sensing w/ manual overrides
Max. aggregate size	2 1/2" (65mm)

BOOM SPECIFICATIONS

5 section Z fold boom (vert. reach)	164' (50 m)
Maximum horizontal reach	149' 2" (45.4 m)
Reach from front of truck	140' (42.6 m)
Unfolding height	30' 4" (9.2 m)
Rotation	370 degree
Section articulation	92 / 180 / 240 / 180 / 245
Proportional Boom	Yes
Delivery line	5" (125 mm)
1st Section	34' (10.4 m)
2nd Section	29' 2" (8.9 m)
3rd Section	28' 10" (8.6 m)
4th Section	28' 10" (8.6 m)
5th Section	30' 2" (9.2 m)

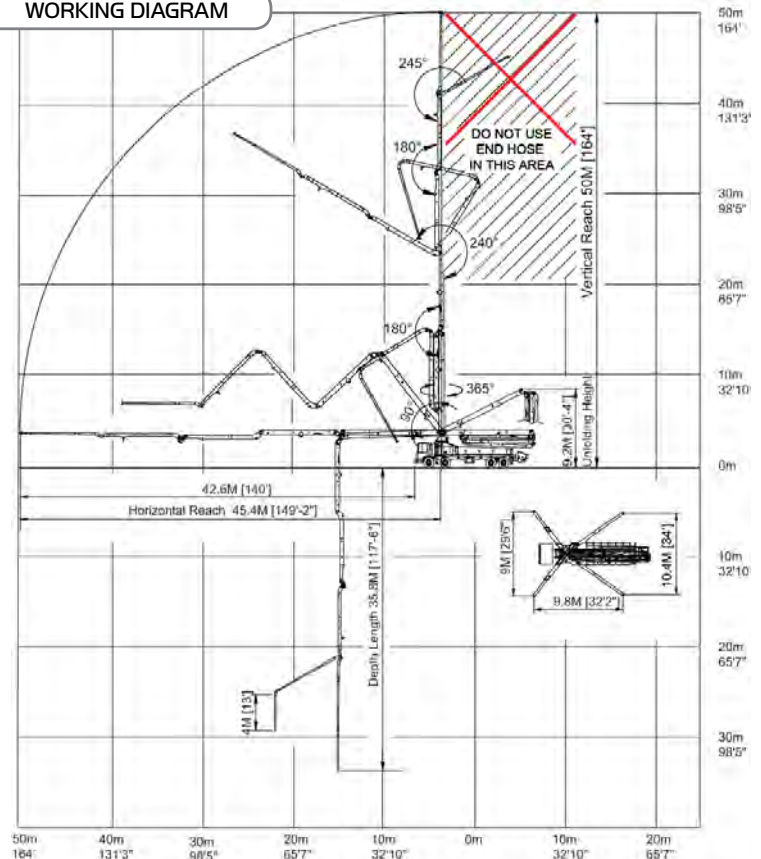
OUTRIGGER SPECIFICATIONS

All hydraulic	Yes
Front spread	29' 6" (9 m)
Rear spread	34' (10.4 m)
Max Outrigger weight	35,000 Kg (77,161 Lbs)

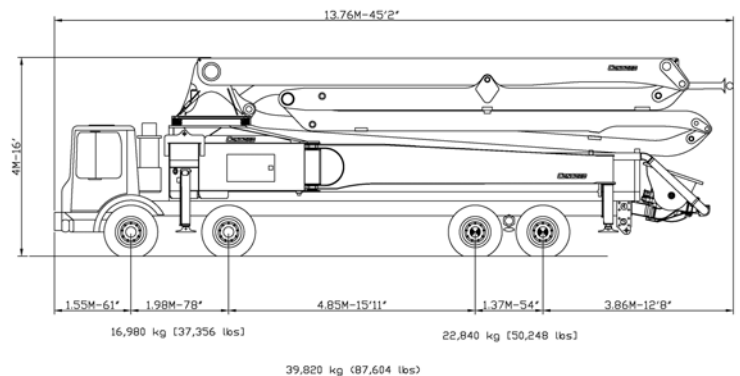
STANDARD ACCESSORIES

5" (125mm) pipe & elbows	One safety sling
Wireless proportional remote control	Tool box with basic repair items and testing gauge
LED boom light kit	Spare hydraulic hose kit
LED working lamps on the side	Spare sensing valves
Magnetic working lamp	Spare pumping relay and fuses
Blow-out system cap (water & air)	One clamp (125 mm)
Hopper vibrator	Outrigger pads 4 pieces
Automatic greasing system	Grundfos type water pump
(hopper only) Lincoln	One Water hose plus nozzle
End hose length 13' (4 m)	Two clean up sponges
Transition door with slurry port	Clean-up scraper
Company name & phone number decals	Two manual books
	Quick couplings for filter system

WORKING DIAGRAM



WEIGHT DIAGRAM



Great for maneuvering in and out of tight job sites with convenience of X-style outriggers; 5 sections Z-R fold boom, 5 inch line, 180 cubic meters per hour.



PUMP SPECIFICATIONS

Maximum output	237 yd ³ /hr (180 m ³ /hr)
Concrete cylinder (hard chromed)	9" x 83" (230 mm x 2100 mm)
Strokes per minute	30
Concrete pressure (rod side)	1269 PSI (87.5 Bar)
Concrete pressure (head side)	1885 PSI (130 Bar)
Hopper capacity	21 ft ³ (600 liters)
S-Tube	9" x 7" (230 mm x 180 mm)
Hydraulic pump	Rexroth A20VLO190
Cycling system	All hydraulic sensing w/ manual overrides
Max. aggregate size	2 1/2" (65 mm)

BOOM SPECIFICATIONS

5 section roll & fold (vert. reach)	153' 2" (46.7 m)
Maximum horizontal reach	140' 7" (42.8 m)
Reach from front of truck	131' 2" (40 m)
Unfolding height	28' (8.6 m)
Rotation	370 degree
Section articulation	92 / 180 / 225 / 180 / 245
Proportional Boom	Yes
Delivery line	5" (125 mm)
1st Section	31' 2" (9.5 m)
2nd Section	25' 7" (7.8 m)
3rd Section	26' 11" (8.2 m)
4th Section	27' 11" (8.5 m)
5th Section	27' 11" (8.5 m)

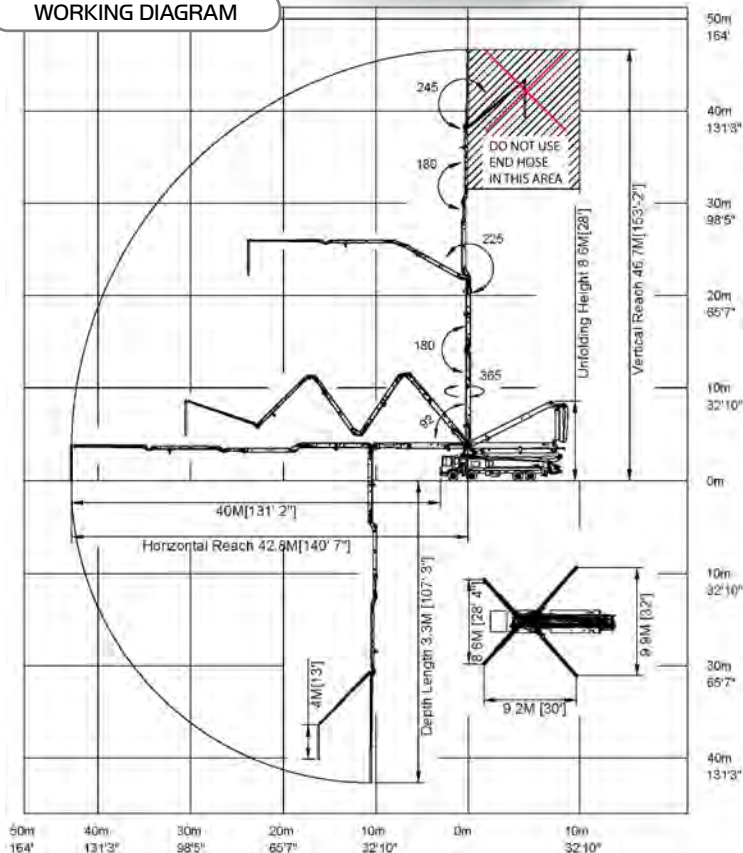
OUTRIGGER SPECIFICATIONS

All hydraulic	Yes
Front spread	28' 4" (8.6 m)
Rear spread	32' (9.9 m)
Max Outrigger weight	28,000 Kg (61,810 Lbs)

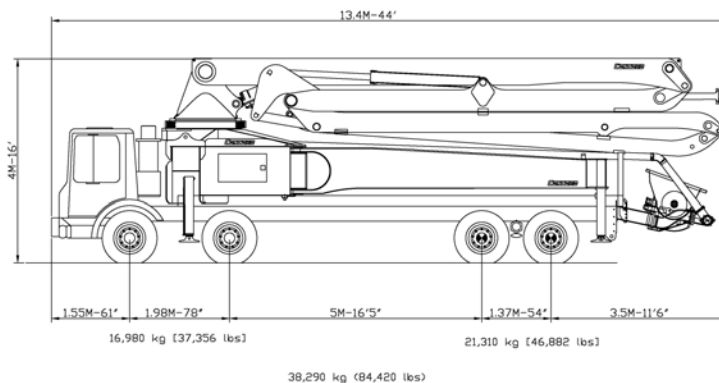
STANDARD ACCESSORIES

5" (125mm) pipe & elbows	One safety sling
Wireless proportional remote control	Tool box with basic repair items and testing gauge
LED boom light kit	Spare hydraulic hose kit
LED working lamps on the side	Spare sensing valves
Magnetic working lamp	Spare pumping relay and fuses
Blow-out system cap (water & air)	One clamp (125 mm)
Hopper vibrator	Outrigger pads 4 pieces
Automatic greasing system	Grundfos type water pump
(hopper only) Lincoln	One Water hose plus nozzle
End hose length 13' (4 m)	Two clean up sponges
Transition door with slurry port	Clean-up scraper
Company name & phone number decals	Two manual books
	Quick couplings for filter system

WORKING DIAGRAM



WEIGHT DIAGRAM



Versatile concrete pump; 5 sections,
Z-R fold, 5 inch line,
170 cubic meters per hour.



PUMP SPECIFICATIONS

Maximum output (fully variable)	224 yd ³ /hr (170 m ³ /hr)
Concrete cylinder (hard chromed)	9" x 83" (230 mm x 2100 mm)
Strokes per minute	30
Concrete pressure (rod side)	1043 PSI (72 Bar)
Concrete pressure (head side)	1600 PSI (114 Bar)
Hopper capacity	21 ft ³ (600 liters)
S-Tube	9" x 7" (230 mm x 180 mm)
Hydraulic pump	Rexroth A11VL0260
Cycling system	All hydraulic sensing w/ manual overrides
Max. aggregate size	2 1/2" (65 mm)

BOOM SPECIFICATIONS

5 section Z fold boom (vert. reach)	129'10" (39.6 m)
Maximum horizontal reach	117'3" (35.7 m)
Reach from front of truck	107'9" (32.8 m)
Unfolding height	26' (7.9 m)
Rotation	370 degree
Section articulation	92 / 180 / 240 / 180 / 240
Proportional Boom	Yes
Delivery line	5" (125 mm)
1st Section	29'5" (9.0 m)
2nd Section	22'3" (6.8 m)
3rd Section	22'3" (6.8 m)
4th Section	21'6" (6.6 m)
5th Section	20'9" (6.4 m)

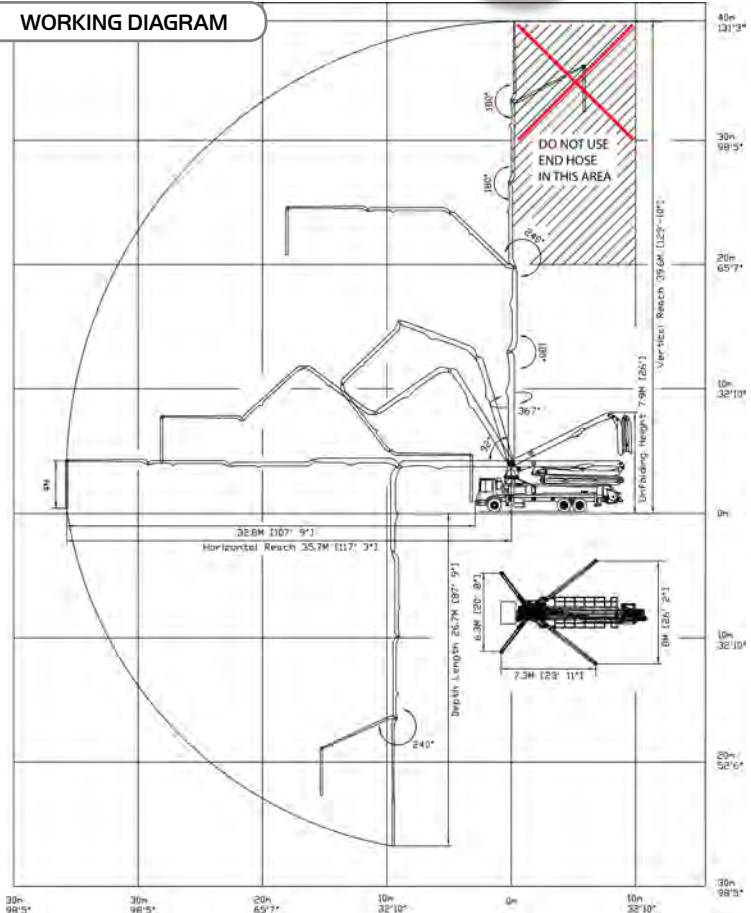
OUTRIGGER SPECIFICATIONS

All hydraulic	Yes
Front spread	20' 8" (6.3 m)
Rear spread	26'2" (8.0 m)
Max Outrigger weight	23,000 Kg (50,706 Lbs)

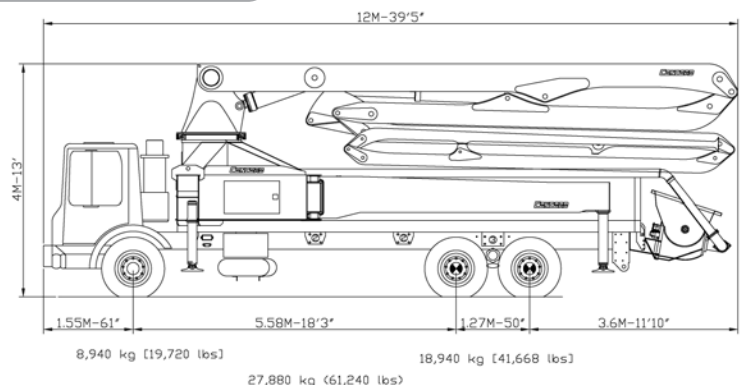
STANDARD ACCESSORIES

5" (125mm) pipe & elbows	One safety sling
Wireless proportional remote control	Tool box with basic repair items and testing gauge
LED boom light kit	Spare hydraulic hose kit
LED working lamps on the side	Spare sensing valves
Magnetic working lamp	Spare pumping relay and fuses
Blow-out system cap (water & air)	One clamp (125 mm)
Hopper vibrator	Outrigger pads 4 pieces
Automatic greasing system	Grundfos type water pump
(hopper only) Lincoln	One Water hose plus nozzle
End hose length 13' (4 m)	Two clean up sponges
Transition door with slurry port	Clean-up scraper
Company name & phone number decals	Two manual books
	Quick couplings for filter system

WORKING DIAGRAM



WEIGHT DIAGRAMS



Great for maneuvering in and out of tight job sites with convenience of X-style outriggers; 4 sections Z-fold boom, 5 inch line, 170 cubic meters per hour.



PUMP SPECIFICATIONS

Maximum output	224 yd ³ /hr (170 m ³ /hr)
Concrete cylinder (hard chromed)	9" x 83" (230 mm x 2100 mm)
Strokes per minute	30
Concrete pressure (rod side)	1043 PSI (72 Bar)
Concrete pressure (head side)	1600 PSI (114 Bar)
Hopper capacity	21 cu/ft (600 liters)
S-Tube	9" x 7" (230 mm x 180 mm)
Hydraulic pump	Rexroth A11VL0260
Cycling system	All hydraulic sensing w/ manual overrides
Max. aggregate size	2 1/2" (65 mm)

BOOM SPECIFICATIONS

4 section Z fold boom (vert. reach)	130' (39.7 m)
Maximum horizontal reach	117' 5" (35.8 m)
Reach from front of truck	108' 6" (33.1 m)
Unfolding height	29' 10" (9.1 m)
Rotation	370 degree
Section articulation	92 / 180 / 240 / 245
Proportional Boom	Yes
Delivery line	5" (125 mm)
1st Section	31' 2" (9.5 m)
2nd Section	28' 3" (8.6 m)
3rd Section	28' 7" (8.7 m)
4th Section	29' 2" (8.9 m)

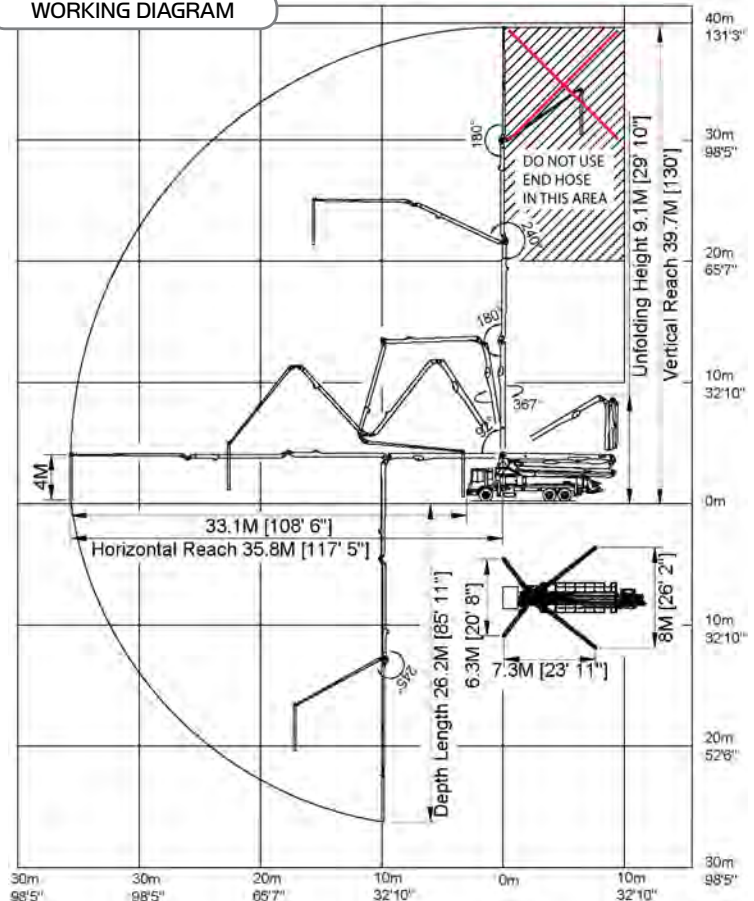
OUTRIGGER SPECIFICATIONS

All hydraulic	Yes
Front spread	20' 8" (6.3 m)
Rear spread	26' 2" (8 m)
Max Outrigger weight	23,000 Kg (50,706 Lbs)

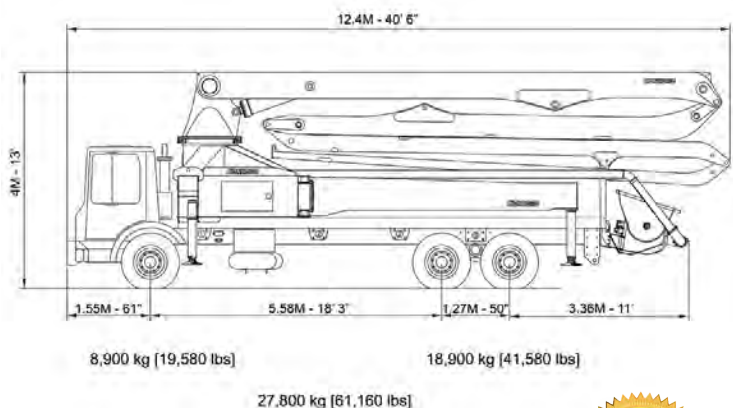
STANDARD ACCESSORIES

5" (125mm) pipe & elbows	One safety sling
Wireless proportional remote control	Tool box with basic repair items and testing gauge
LED boom light kit	Spare hydraulic hose kit
LED working lamps on the side	Spare sensing valves
Magnetic working lamp	Spare pumping relay and fuses
Blow-out system cap (water & air)	One clamp (125 mm)
Hopper vibrator	Outrigger pads 4 pieces
Automatic greasing system	Grundfos type water pump
(hopper only) Lincoln	One Water hose plus nozzle
End hose length 13' (4 m)	Two clean up sponges
Transition door with slurry port	Clean-up scraper
Company name & phone number decals	Two manual books
	Quick couplings for filter system

WORKING DIAGRAM



WEIGHT DIAGRAMS



Perfect for commercial/residential work; compact footprint; 4 sections roll-n-fold with 3rd section that articulates up to 240°, 5 inch line, 170 cubic meters per hour.



PUMP SPECIFICATIONS

Maximum output	224 yd ³ /hr (170 m ³ /hr)
Concrete cylinder (hard chromed)	9" x 83" (230 mm x 2100 mm)
Strokes per minute	30
Concrete pressure (rod side)	1043 PSI (72 Bar)
Concrete pressure (head side)	1600 PSI (114 Bar)
Hopper capacity	21 ft ³ (600 liters)
S-Tube	9" x 7" (230 mm x 180 mm)
Hydraulic pump	Rexroth A11VLO260
Cycling system	All hydraulic sensing w/ manual overrides
Max. aggregate size	2 1/2" (65 mm)

BOOM SPECIFICATIONS

4 section roll & fold (vert. reach)	131' 2" (40 m)
Maximum horizontal reach	118' 4" (36.1 m)
Reach from front of truck	109' (33.2 m)
Unfolding height	30' 2" (9.2 m)
Rotation	370 degree
Section articulation	92 / 180 / 240 / 245
Proportional Boom	Yes
Delivery line	5" (125 mm)
1st Section	31' 2" (9.5 m)
2nd Section	28' 3" (8.6 m)
3rd Section	28' 7" (8.7 m)
4th Section	31' 2" (9.5 m)

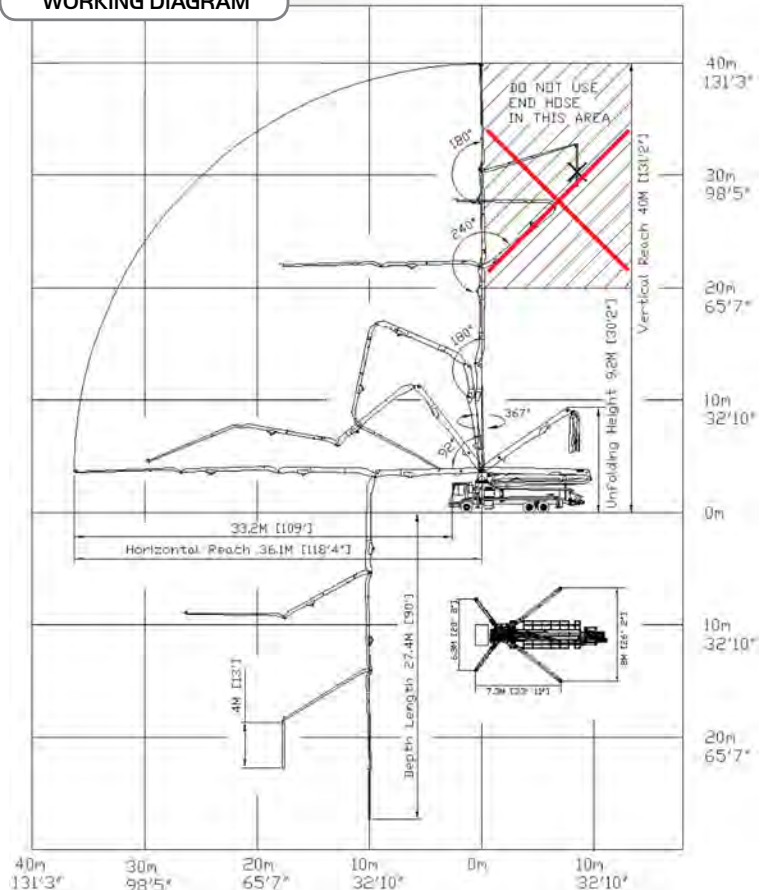
OUTRIGGER SPECIFICATIONS

All hydraulic	Yes
Front spread	20' 8" (6.3 m)
Rear spread	26' 2" (8 m)
Max Outrigger weight	23,000 Kg (50,706 Lbs)

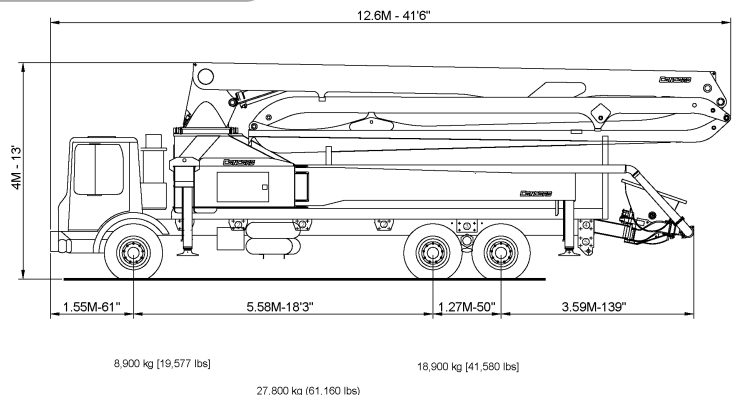
STANDARD ACCESSORIES

5" (125mm) pipe & elbows	One safety sling
Wireless proportional remote control	Tool box with basic repair items and testing gauge
LED boom light kit	Spare hydraulic hose kit
LED working lamps on the side	Spare sensing valves
Magnetic working lamp	Spare pumping relay and fuses
Blow-out system cap (water & air)	One clamp (125 mm)
Hopper vibrator	Outrigger pads 4 pieces
Automatic greasing system	Grundfos type water pump
(hopper only) Lincoln	One Water hose plus nozzle
End hose length 13' (4 m)	Two clean up sponges
Transition door with slurry port	Clean-up scraper
Company name & phone number decals	Two manual books
	Quick couplings for filter system

WORKING DIAGRAM



WEIGHT DIAGRAMS



Versatile concrete pump; 5 sections,
Z-R fold, 5 inch line,
170 cubic meters per hour.



PUMP SPECIFICATIONS

Maximum output (fully variable)	224 yd ³ /hr (170 m ³ /hr)
Concrete cylinder (hard chromed)	9" x 83" (230 mm x 2100 mm)
Strokes per minute	30
Concrete pressure (rod side)	1043 PSI (72 Bar)
Concrete pressure (head side)	1600 PSI (114 Bar)
Hopper capacity	21 ft ³ (600 liters)
S-Tube	9" x 7" (230 mm x 180 mm)
Hydraulic pump	Rexroth A11VLO260
Cycling system	All hydraulic sensing w/ manual overrides
Max. aggregate size	2 1/2" (65 mm)

BOOM SPECIFICATIONS

5 section Z fold boom (vert. reach)	123' (37.5 m)
Maximum horizontal reach	110' (33.6 m)
Reach from front of truck	101' (30.8 m)
Unfolding height	23'4" (7.1 m)
Rotation	370 degree
Section articulation	91 / 180 / 240 / 180 / 240
Proportional Boom	Yes
Delivery line	5" (125 mm)
1st Section	25'7" (7.8 m)
2nd Section	21'8" (6.6 m)
3rd Section	21'8" (6.6 m)
4th Section	21' (6.4 m)
5th Section	20'4" (6.2 m)

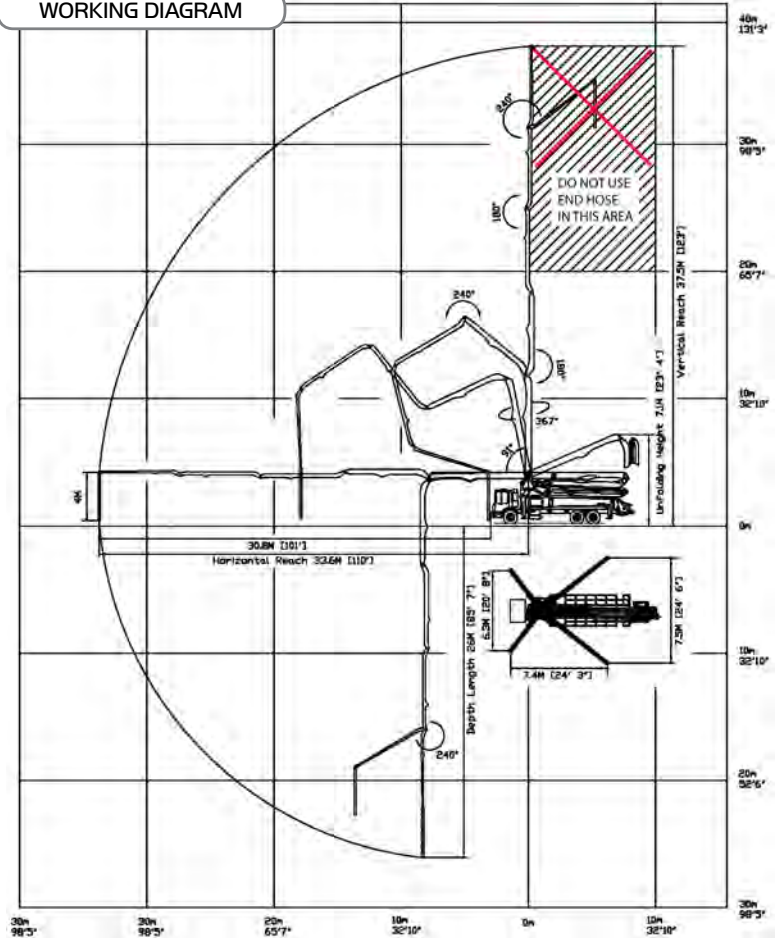
OUTRIGGER SPECIFICATIONS

All hydraulic	Yes
Front spread	20' 8" (6.3 m)
Rear spread	24'6" (7.5 m)
Max Outrigger weight	21,800 Kg (48,060 Lbs)

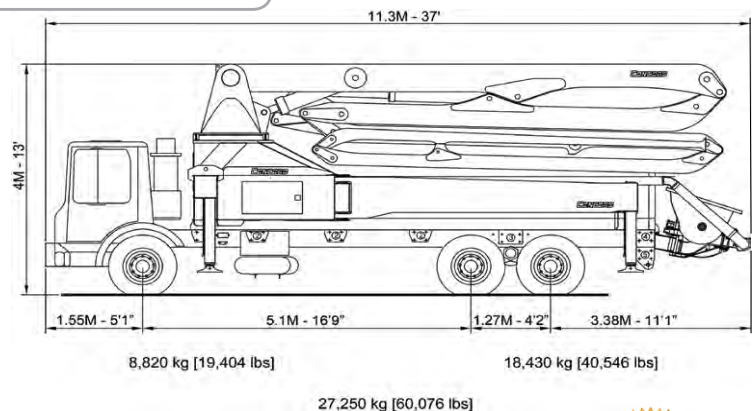
STANDARD ACCESSORIES

5" (125mm) pipe & elbows	One safety sling
Wireless proportional remote control	Tool box with basic repair items and testing gauge
LED boom light kit	Spare hydraulic hose kit
LED working lamps on the side	Spare sensing valves
Magnetic working lamp	Spare pumping relay and fuses
Blow-out system cap (water & air)	One clamp (125 mm)
Hopper vibrator	Outrigger pads 4 pieces
Automatic greasing system	Grundfos type water pump
(hopper only) Lincoln	One Water hose plus nozzle
End hose length 13' (4 m)	Two clean up sponges
Transition door with slurry port	Clean-up scraper
Company name & phone number decals	Two manual books
	Quick couplings for filter system

WORKING DIAGRAM



WEIGHT DIAGRAMS



Outstanding workhorse in areas with overhead obstacles; 4 sections Z-fold, 5 inch line, 170 cubic meters per hour.



PUMP SPECIFICATIONS

Maximum output (fully variable)	224 yd ³ /hr (170 m ³ /hr)
Concrete cylinder (hard chromed)	9" x 83" (230 mm x 2100 mm)
Strokes per minute	30
Concrete pressure (rod side)	1043 PSI (72 Bar)
Concrete pressure (head side)	1600 PSI (114 Bar)
Hopper capacity	21 ft ³ (600 liters)
S-Tube	9" x 7" (230 mm x 180 mm)
Hydraulic pump	Rexroth A11VLO260
Cycling system	All hydraulic sensing w/ manual overrides
Max. aggregate size	2 1/2" (65 mm)

BOOM SPECIFICATIONS

4 section Z fold boom (vert. reach)	124' 7" (38 m)
Maximum horizontal reach	111' 8" (34 m)
Reach from front of truck	103' 9" (31.6 m)
Unfolding height	28' 7" (8.7 m)
Rotation	370 degree
Section articulation	92 / 187 / 240 / 245
Proportional Boom	Yes
Delivery line	5" (125 mm)
1st Section	30' 2" (9.2 m)
2nd Section	26' 11" (8.2 m)
3rd Section	27' 3" (8.3 m)
4th Section	27' 8" (8.4 m)

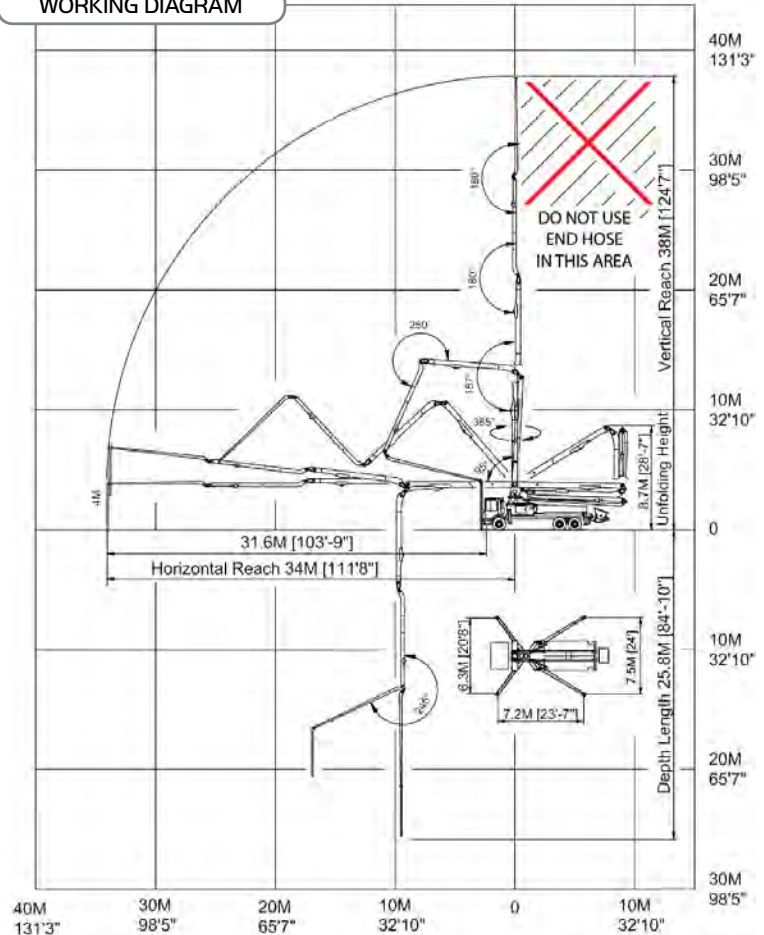
OUTRIGGER SPECIFICATIONS

All hydraulic	Yes
Front spread	20' 8" (6.3 m)
Rear spread	24' (7.5 m)
Max Outrigger weight	21,800 Kg (48,060 Lbs)

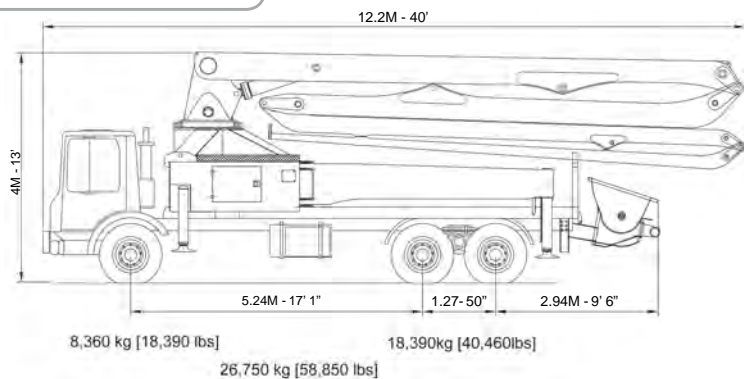
STANDARD ACCESSORIES

5" (125mm) pipe & elbows	One safety sling
Wireless proportional remote control	Tool box with basic repair items and testing gauge
LED boom light kit	Spare hydraulic hose kit
LED working lamps on the side	Spare sensing valves
Magnetic working lamp	Spare pumping relay and fuses
Blow-out system cap (water & air)	One clamps (125 mm)
Hopper vibrator	Outrigger pads 4 pieces
Automatic greasing system	Grundfos type water pump
(hopper only) Lincoln	One Water hose plus nozzle
End hose length 13' (4 m)	Two clean up sponges
Transition door with slurry port	Clean-up scraper
Company name & phone number decals	Two manual books
	Quick couplings for filter system

WORKING DIAGRAM



WEIGHT DIAGRAMS



Perfect for commercial/residential work; compact footprint; 4 sections roll-n-fold with 3rd section that can articulate up to 240°, 5 inch line, 170 cubic meters per hour.



PUMP SPECIFICATIONS

Maximum output (fully variable)	224 yd ³ /hr (170 m ³ /hr)
Concrete cylinder (hard chromed)	9" x 83" (230 mm x 2100 mm)
Strokes per minute	30
Concrete pressure (rod side)	1043 PSI (72 Bar)
Concrete pressure (head side)	1600 PSI (114 Bar)
Hopper capacity	21 ft ³ (600 liters)
S-Tube	9" x 7" (230 mm x 180 mm)
Hydraulic pump	Rexroth A11VLO260
Cycling system	All hydraulic sensing w/ manual overrides
Max. aggregate size	2 1/2" (65 mm)

BOOM SPECIFICATIONS

4 section Z fold boom (vert. reach)	124' 9" (38 m)
Maximum horizontal reach	112' 3" (34.2 m)
Reach from front of truck	104' 3" (31.8 m)
Unfolding height	29' 2" (8.9 m)
Rotation	370 degree
Section articulation	92/ 180/ 240/ 245
Proportional Boom	Yes
Delivery line	5" (125 mm)
1st Section	30' 2" (9.2 m)
2nd Section	26' 9" (8.2 m)
3rd Section	27' 3" (8.3 m)
4th Section	27' 8" (8.4 m)

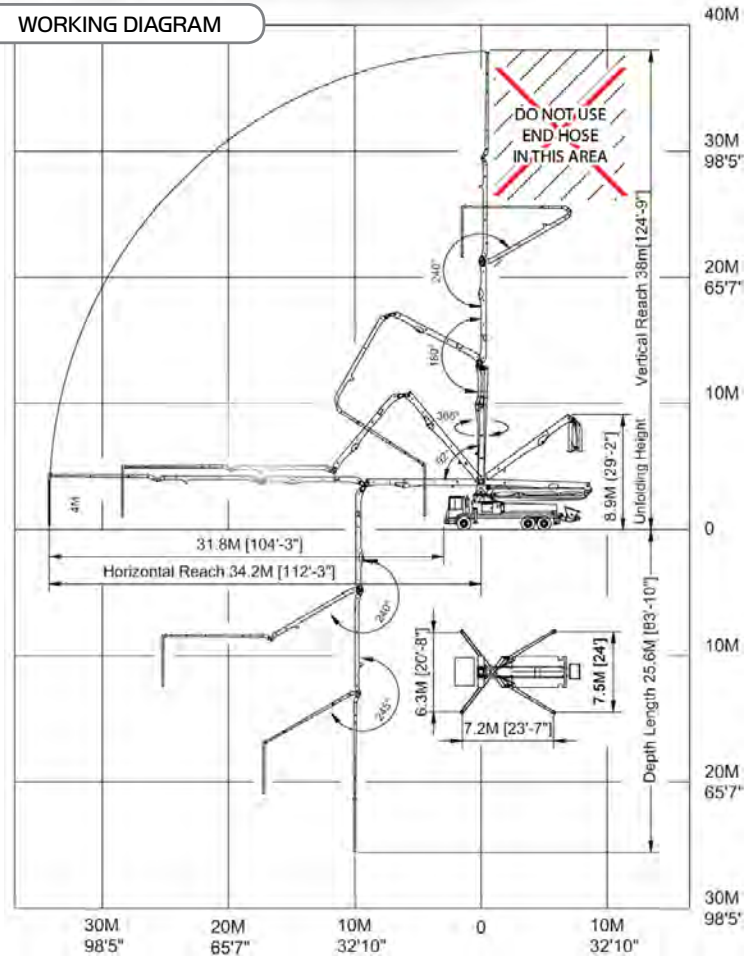
OUTRIGGER SPECIFICATIONS

All hydraulic	Yes
Front spread	20' 8" (6.3 m)
Rear spread	24' (7.5 m)
Max Outrigger weight	21,800 Kg (48,060 Lbs)

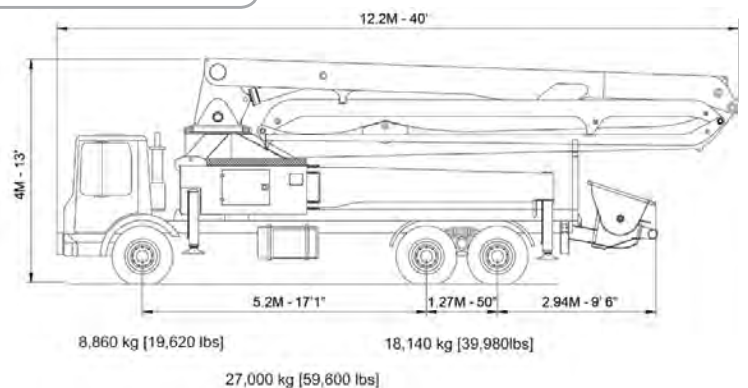
STANDARD ACCESSORIES

5" (125mm) pipe & elbows	One safety sling
Wireless proportional remote control	Tool box with basic repair items and testing gauge
LED boom light kit	Spare hydraulic hose kit
LED working lamps on the side	Spare sensing valves
Magnetic working lamp	Spare pumping relay and fuses
Blow-out system cap (water & air)	One clamp (125 mm)
Hopper vibrator	Outrigger pads 4 pieces
Automatic greasing system (hopper only) Lincoln	Grundfos type water pump
End hose length 13' (4 m)	One Water hose plus nozzle
Transition door with slurry port	Two clean up sponges
Company name & phone number decals	Clean-up scraper
	Two manual books
	Quick couplings for filter system

WORKING DIAGRAM



WEIGHT DIAGRAMS



Versatile concrete pump; 5 sections,
multi-Z-boom that can unfold at 19 feet,
5 inch line, 170 cubic meters per hour.



PUMP SPECIFICATIONS

Maximum output (fully variable)	224 yd ³ /hr (170 m ³ /hr)
Concrete cylinder (hard chromed)	9" x 83" (230 mm x 2100 mm)
Strokes per minute	30
Concrete pressure (rod side)	1043 PSI (72 Bar)
Concrete pressure (head side)	1600 PSI (114 Bar)
Hopper capacity	21 ft ³ (600 liters)
S-Tube	9" x 7" (230 mm x 180 mm)
Hydraulic pump	Rexroth A11VL0260
Cycling system	All hydraulic sensing w/ manual overrides
Max. aggregate size	2 1/2" (65 mm)

BOOM SPECIFICATIONS

5 section Z fold boom (vert. reach)	105' (32 m)
Maximum horizontal reach	92' 10" (28.3 m)
Reach from front of truck	85' (25.9 m)
Unfolding height	19' (5.8 m)
Rotation	370 degree
Section articulation	92 / 180 / 240 / 240 / 240
Proportional Boom	Yes
Delivery line	5" (125 mm)
1st Section	25'3" (7.7 m)
2nd Section	16'9" (5.1 m)
3rd Section	16'5" (5.0 m)
4th Section	16'5" (5.0 m)
5th Section	16'1" (4.9 m)

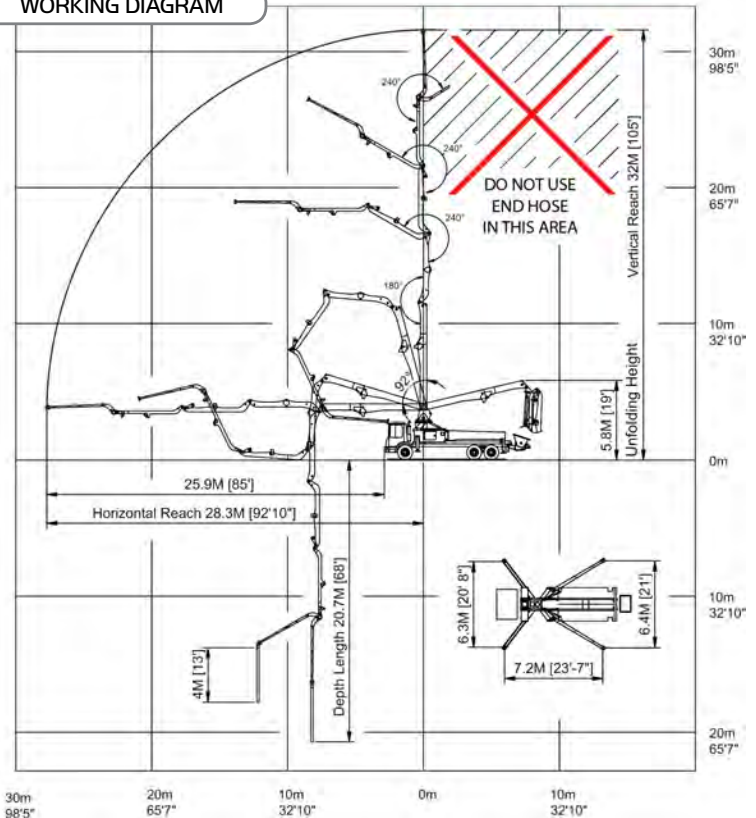
OUTRIGGER SPECIFICATIONS

All hydraulic	Yes
Front spread	20' 8" (6.3 m)
Rear spread	21' (6.4 m)
Max Outrigger weight	20,500 Kg (45,195 Lbs)

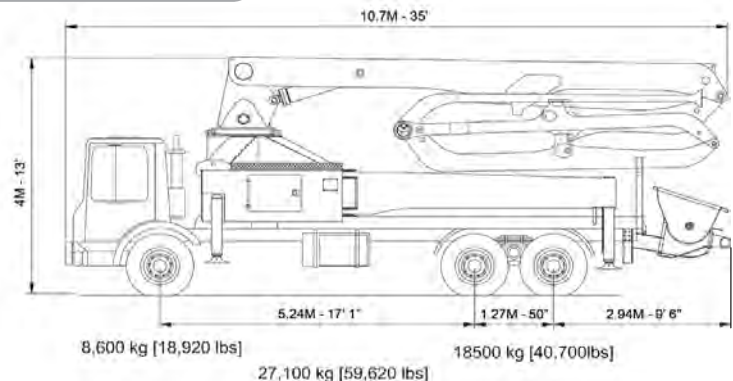
STANDARD ACCESSORIES

5" (125mm) pipe & elbows	One safety sling
Wireless proportional remote control	Tool box with basic repair items and testing gauge
LED boom light kit	Spare hydraulic hose kit
LED working lamps on the side	Spare sensing valves
Magnetic working lamp	Spare pumping relay and fuses
Blow-out system cap (water & air)	One clamp (125 mm)
Hopper vibrator	Outrigger pads 4 pieces
Automatic greasing system	Grundfos type water pump
(hopper only) Lincoln	One Water hose plus nozzle
End hose length 13' (4 m)	Two clean up sponges
Transition door with slurry port	Clean-up scraper
Company name & phone number decals	Two manual books
	Quick couplings for filter system

WORKING DIAGRAM



WEIGHT DIAGRAMS



Outstanding pump for confined job sites,
residential/commercial; 4 section Z-fold,
5 inch line, 120 cubic meters per hour.



PUMP SPECIFICATIONS

Maximum output (fully variable)	157 yd ³ /hr (120 m ³ /hr)
Delivery cylinder (hard chromed)	9" X 70" (230 mm X 1800 mm)
Strokes per minute	28
Concrete pressure (rod side)	1043 PSI (72 Bar)
Concrete pressure (head side)	1600 PSI (114 Bar)
Hopper capacity	21 ft ³ (600 liters)
S-tube	8" X 7" (200 mm X 180 mm)
Hydraulic pump	Rexroth A11VLO190
Cycling System	All hydraulic sensing w/ manual overrides
Max. aggregate size	2 1/2" (65 mm)

BOOM SPECIFICATIONS

4 section z-fold (vert.reach)	99'4" (30.3 m)
Maximum horizontal reach	86'3" (26.3 m)
Reach from front of truck	77'4" (23.6 m)
Unfolding height	21' (6.5 m)
Rotation	370 degree
Section articulation	90 / 180 / 255 / 245
Proportional Boom	Yes
Delivery line	5" (125 mm)
1st Section	25' 3" (7.7 m)
2nd Section	19' 7" (6 m)
3rd Section	20' 3" (6.2 m)
4th Section	20' 7" (6.3 m)

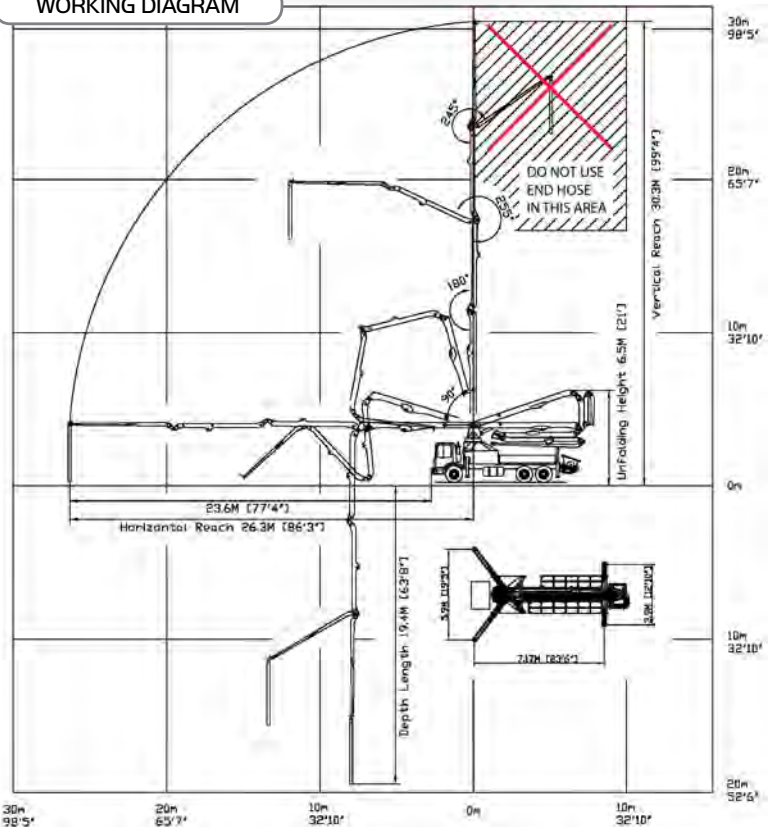
OUTRIGGER SPECIFICATIONS

All hydraulic	Yes
Front spread	19' 5" (5.9 m)
Rear spread	12' 10" (3.9 m)
Max Outrigger weight	13,800 Kg (30,423 Lbs)

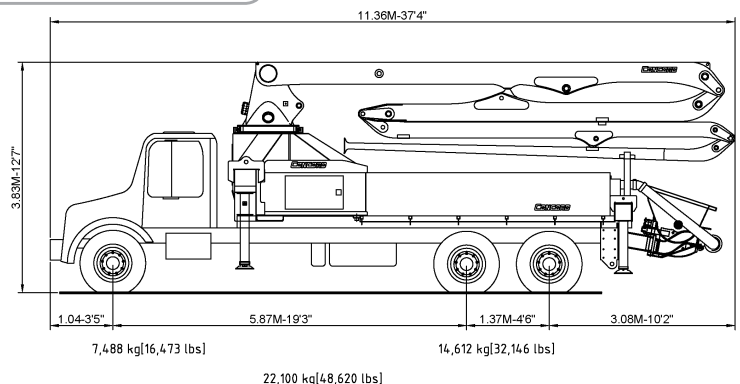
STANDARD ACCESSORIES

5" (125mm) pipe & elbows	One safety sling
Wireless proportional remote control	Tool box with basic repair items and testing gauge
LED boom light kit	Spare hydraulic hose kit
LED working lamps on the side	Spare sensing valves
Magnetic working lamp	Spare pumping relay and fuses
Blow-out system cap (water & air)	One clamp (125 mm)
Hopper vibrator	Outrigger pads 4 pieces
Automatic greasing system	Grundfos type water pump
(hopper only) Lincoln	One Water hose plus nozzle
End hose length 13' (4 m)	Two clean up sponges
Transition door with slurry port	Clean-up scraper
Company name & phone number decals	Two manual books
	Quick couplings for filter system

WORKING DIAGRAM



WEIGHT DIAGRAM



PUMP SPECIFICATIONS

Maximum output (fully variable)	108 yd ³ /hr (90 m ³ /hr)
Concrete cylinder (hard chromed)	8" X 83" (200 mm X 2100 mm)
Strokes per minute (rod side)	29
Strokes per minute (head side)	22
Concrete pressure (rod side)	2219 PSI (153 Bar)
Concrete pressure (head side)	3248 PSI (224 Bar)
Hopper capacity	21 ft ³ (600 liters)
S-tube	8" X 6" (200 mm X 152.4 mm)
Hydraulic pump	Rexroth A20VL0190
Cycling System	All hydraulic sensing w/ manual overrides. Automatic high and low pressure use.
Max. aggregate size	2 1/2" (65 mm)
Vertical Max (head side)	1476' (450 m)
Horizontal Max. (head side)	3490' (1064 m)

OUTRIGGER SPECIFICATIONS

All hydraulic	Yes
Front spread	7'10" (2.4 m)
Rear spread	7'10" (2.4 m)

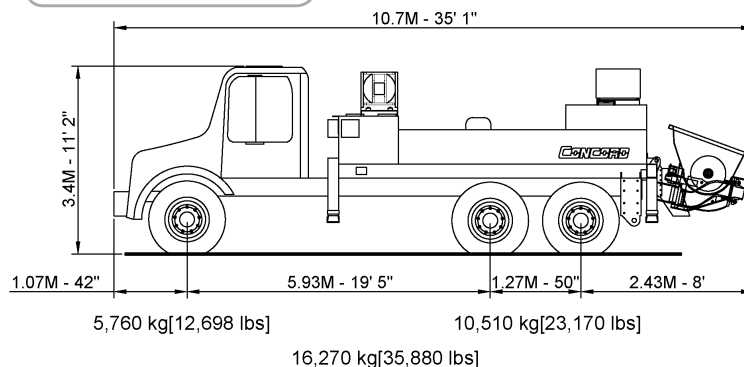
STANDARD ACCESSORIES

Wireless proportional remote control	Spare hydraulic hose kit
Magnetic working lamp	Spare sensing valves
Hopper vibrator	Spare pumping relay and fuses
Automatic greasing system (hopper only) Lincoln	Outrigger pads 4 pieces
Toolbox with basic repair items and testing gauge	Grundfos type water pump
Company name & phone number decals	One Water hose plus nozzle
Quick couplings for filter system	Clean-up scraper
	Two manual books

The ideal solution for large commercial pours. Our compact powerhouse offers a strong combination of both mobility and function with the ability to pump up to 1476 ft / 450 m vertically; 108/90 cubic meters/yard per hour.



WEIGHT DIAGRAM



PUMP SPECIFICATIONS

Maximum output (fully variable)	139 yd ³ /hr (100 m ³ /hr)
Concrete cylinder (hard chromed)	8" X 70" (200 mm X 1800 mm)
Strokes per minute (rod side)	28
Strokes per minute (head side)	20
Concrete pressure (rod side)	1334 PSI (92 Bar)
Concrete pressure (head side)	2132 PSI (147 Bar)
Hopper capacity	21 ft ³ (600 liters)
S-tube	8" X 7" (200 mm X 180 mm)
Hydraulic pump	Rexroth A11VL0190
Cycling System	All hydraulic sensing w/ manual overrides. Automatic high and low pressure use.
Max. aggregate size	2 1/2" (65 mm)
Vertical Max. (rod side)	360' (110 m)
Horizontal Max. (rod side)	967' (295 m)
Vertical Max (head side)	498' (152 m)
Horizontal Max. (head side)	1345' (410 m)

OUTRIGGER SPECIFICATIONS

All hydraulic	Yes
Rear spread	7'10" (2.4 m)

STANDARD ACCESSORIES

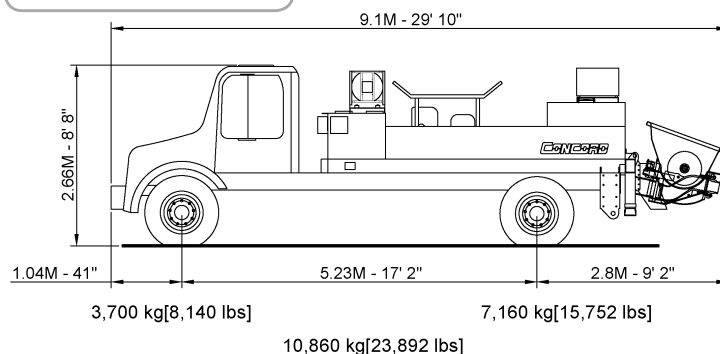
Wireless proportional remote control	Spare hydraulic hose kit
Magnetic working lamp	Spare sensing valves
Hopper vibrator	Spare pumping relay and fuses
Automatic greasing system (hopper only) Lincoln	Outrigger pads 2 pieces
Toolbox with basic repair items and testing gauge	Grundfos type water pump
Company name & phone number decals	One Water hose plus nozzle
Quick couplings for filter system	Clean-up scraper
	Two manual books

CML-100 HR

Performs great on both large commercial pours and the smallest residential job; 100 cubic meters/yard per hour.



WEIGHT DIAGRAM



PUMP SPECIFICATIONS

Maximum output (fully variable)	139 yd ³ /hr (100m ³ /hr)
Concrete cylinder (hard chromed)	8" X 70" (200 mm X 1800 mm)
Strokes per minute (rod side)	28
Concrete pressure (rod side)	1334 PSI (92 Bar)
Concrete pressure (head side)	2132 PSI (147 Bar)
Hopper capacity	21 ft ³ (600 liters)
S-tube	8" X 7" (200 mm X 180 mm)
Hydraulic pump	Rexroth A11VL0190
Cycling System	All hydraulic sensing w/ manual overrides. Manual high and low pressure use.
Max. aggregate size	2 1/2" (65 mm)
Vertical Max. (rod side)	360' (110 m)
Horizontal Max. (rod side)	967' (295 m)

OUTRIGGER SPECIFICATIONS

All hydraulic	Yes
Rear spread	7'10" (2.4 m)

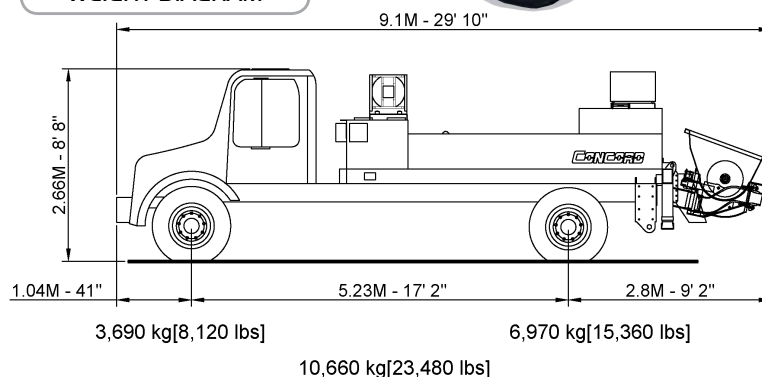
STANDARD ACCESSORIES

Wireless proportional remote control	Spare hydraulic hose kit
Magnetic working lamp	Spare sensing valves
Hopper vibrator	Spare pumping relay and fuses
Automatic greasing system (hopper only) Lincoln	Outrigger pads 2 pieces
Toolbox with basic repair items and testing gauge	Grundfos type water pump
Company name & phone number decals	One Water hose plus nozzle
Quick couplings for filter system	Clean-up scraper
	Two manual books

The popular solution for large commercial pours and the smallest residential job; 100 cubic meters/yards per hour.



WEIGHT DIAGRAM



PUMP SPECIFICATIONS

Maximum output (fully variable)	92 yd ³ /hr (70m ³ /hr)
Concrete cylinder (hard chromed)	7" X 55" (180 mm X 1400 mm)
Strokes per minute (rod side)	33
Concrete pressure	1131 PSI (78 Bar)
Hopper capacity	14.1 ft ³ (400 liters)
S-tube	7" X 5" (180 mm X 125 mm)
Hydraulic pump	Rexroth A11VL0145
Cycling System	All hydraulic sensing w/ manual overrides. Manual high and low pressure use.
Max. aggregate size	1.57" (40 mm)
Vertical Max. (rod side)	328' (100 m)
Horizontal Max. (rod side)	984' (300 m)

OUTRIGGER SPECIFICATIONS

All hydraulic	Yes
Rear spread	7'10" (2.4 m)

STANDARD ACCESSORIES

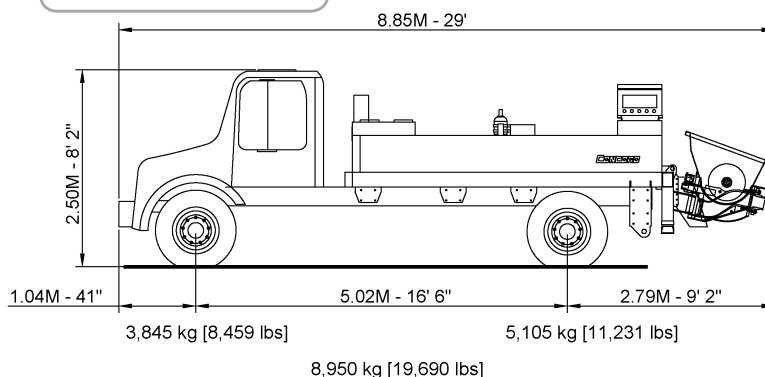
Wireless proportional remote control	Spare hydraulic hose kit
Magnetic working lamp	Spare sensing valves
Hopper vibrator	Spare pumping relay and fuses
Automatic greasing system (hopper only)	Outrigger pads 2 pieces
Toolbox with basic repair items and testing gauge	Grundfos type water pump
	One Water hose plus nozzle
	Clean-up scraper
	Two manual books

CML-70

Performs great on both large commercial pours and the smallest residential job; 70 cubic meters/yards per hour.



WEIGHT DIAGRAM

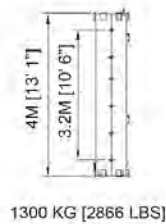
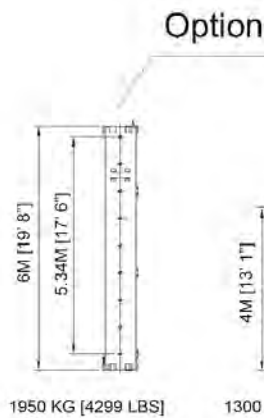
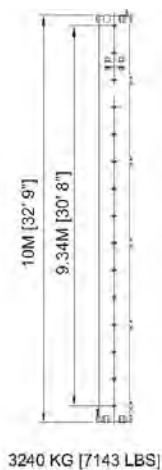
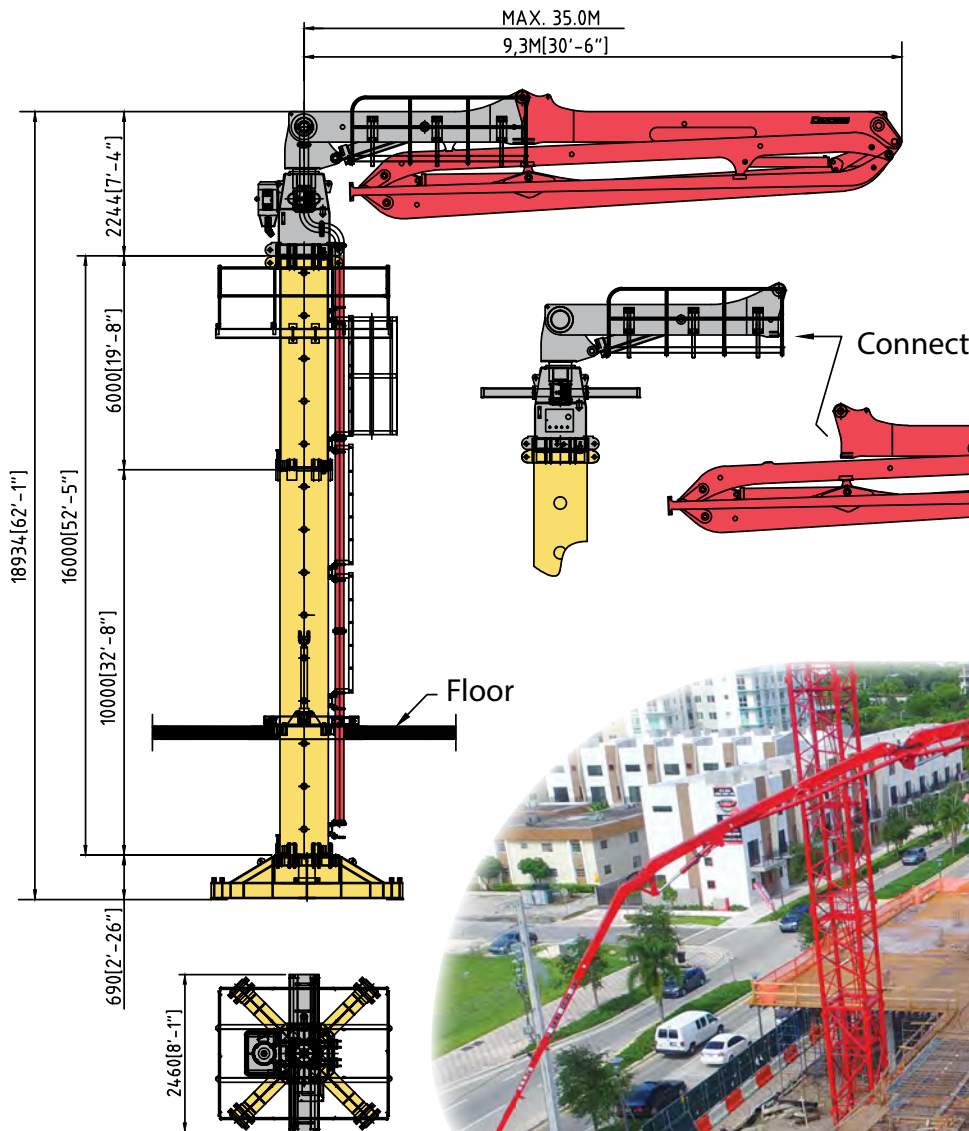


CCP-30-PB

CCP-32-PB

CCP-36-PB

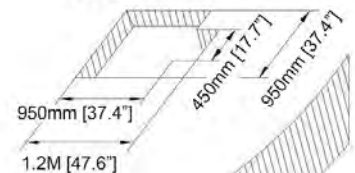
CCP-38-PB



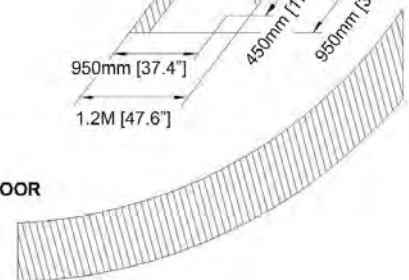
FLOOR FRAME



FLOOR OPENING



FLOOR



The Most Efficient Investment you can make! We Can Prove it!

***** See how much you can generate in 5 years when you buy a Concord *****

Unit Cost \$ 425,000.00

Pump Base Cost :Sample #1

Pump Base Cost		\$	425,000.00
Down Payment	10%	\$	42,500.00
Loan Amount		\$	382,500.00
Annual Intest Rate			5.0%
Loan Period in Years (& months)			5 Year (60)
Residual Buy Out (25%)	25%	\$	106,250.00
Monthly Loan Payment		\$	5,655.89

Income

Based on 6hrs /day X 22 days/month	132 hrs
\$180 / hr X 132 hrs	\$ 23,760.00
\$3.00 / yard X 2500 yds/meters	\$ 7,500.00
Total Monthly Income	\$ 31,260.00

Total Yearly Income \$ 375,120.00

5 Year Total Income	\$ 1,875,600.00
Pump Sale After 5 Years	\$ 212,500.00
Grand Total Income After 5 Years	\$ 2,088,100.00

Operating Expenses

Monthly Loan Payment	\$ 5,655.89	\$ 67,870.68
Operator	\$ 6,000.00	\$ 72,000.00
Maintenance	\$ 1,200.00	\$ 14,400.00
Insurance	\$ 300.00	\$ 3,600.00
Fuel	\$ 2,500.00	\$ 30,000.00
Office Expenses	\$ 1,500.00	\$ 18,000.00
Total Yearly Expenses		\$ 205,870.68

5 Year Total Expenses	\$ 1,029,353.40
Residual Buy Out	\$ 106,250.00
Grand Total Expenses After 5 Years	\$ 1,135,603.40

Grand Total Income After 5 Years	\$ 2,088,100.00
Grand Total Expenses After 5 Years	\$ 1,135,603.40
Net Income After 5 Years	\$ 952,496.60

Unit Cost \$ 550,000.00

Pump Base Cost :Sample #2

Pump Base Cost		\$	550,000.00
Down Payment	10%	\$	55,000.00
Loan Amount		\$	495,000.00
Annual Intest Rate			5.0%
Loan Period in Years (& months)			5 Year (60)
Residual Buy Out (25%)	25%	\$	137,500.00
Monthly Loan Payment		\$	7,319.38

Income

Based on 6hrs /day X 22 days/month	132 hrs
\$200 / hr X 132 hrs	\$ 26,400.00
\$3.00 / yard X 3000 yds/meters	\$ 9,000.00
Total Monthly Income	\$ 35,400.00

Total Yearly Income \$ 424,800.00

5 Year Total Income	\$ 2,124,000.00
Pump Sale After 5 Years	\$ 275,000.00
Grand Total Income After 5 Years	\$ 2,399,000.00

Operating Expenses

Monthly Loan Payment	\$ 7,319.38	\$ 87,832.56
Operator	\$ 7,000.00	\$ 84,000.00
Maintenance	\$ 1,200.00	\$ 14,400.00
Insurance	\$ 300.00	\$ 3,600.00
Fuel	\$ 3,000.00	\$ 36,000.00
Office Expenses	\$ 2,000.00	\$ 24,000.00
Total Yearly Expenses		\$ 249,832.56

5 Year Total Expenses	\$ 1,249,162.80
Residual Buy Out	\$ 137,500.00
Grand Total Expenses After 5 Years	\$ 1,386,662.80

Grand Total Income After 5 Years	\$ 2,399,000.00
Grand Total Expenses After 5 Years	\$ 1,386,662.80
Net Income After 5 Years	\$ 1,012,337.20

Don't forget, your equipment will also be amortized over time.

**** Financing Available**



CONCORD

CONCRETE PUMPS



HEAD OFFICE

1608 Broadway Street
Port Coquitlam, British Columbia
Canada, V3C 2M8

Telephone: 1.604.468.7867
Toll Free: 1.888.201.2223
Email: info@concordpumps.com

** Toll free number only available in North America*



Facebook @ConcordPumps



Instagram @ConcordConcretePumps



Twitter @ConcordPumps

CONCORD CERTIFICATIONS



www.concordpumps.com